

**Child Care Connections welcomes  
Sandi Poltorak, VISTA Member!**

There is a new face around the office! Sandi Poltorak chose CCC to carry out her VISTA work for the next year. Sandi comes to Montana from Nashville, Tennessee and is looking forward to a new living experience and work location. VISTA members commit to serving full-time at a non-profit, or government agency to enhance the wellbeing of community members. She will be assisting the Child Nutrition Program to further develop awareness for healthy eating. She will also spend time grant writing and fundraising for the Child Safety Program. The staff at CCC is extremely fortunate and excited to have Sandi as part of the team! Welcome, Sandi!

**Inside this issue:**

From the Professional Development Office	2
From the Child Care Assistance Office	3
From the Safety Office	3
From the Nutrition Office	4

**NEW HOURS  
EFFECTIVE 10/1/2011**

**Monday-Thursday**  
7:30 a.m. to 5:00 p.m.

**Friday**  
7:30 a.m. - 12:00 p.m.

**Office Closures**  
October 10th  
November 11th,  
24th, 25th  
December 23rd, 26th

**Dates to Remember**

**Child Health Day**  
October 3rd, 2011  
**National Children's Day**  
October 8th, 2011

**Notary Service**

**Kami Doney**  
is certified as  
**Notary Public.**  
Please schedule an  
appointment at  
CCC for notary  
services.

**Board of Directors**

Kate Comstock, *President*  
Elizabeth Linsky, *Treasurer*  
Debbie Berg, *Secretary*  
Ann Klaas  
Jessica Burch  
Renee Gaugler



**MtAEYC Annual Conference**  
**October 14th-15th, 2011**  
**Montana: Creating a State of Well-Being**  
Strand Union Building, Montana State University

The wine and cheese social/ silent auction will be hosted by Child Care Connections! Cost for social is included in conference registration. Cash donation bar. Auction items include: Tickets for Disney Land, FunShine Express curriculum kit, gift baskets, artwork by Sandi Poltorak and more!  
Please visit [www.mtaeyc.org](http://www.mtaeyc.org) for more information.

**Calling all Providers!**



CCC needs volunteers to help carry out their Emergency Preparedness Plan designed to service Gallatin, Park, and Meagher counties. Child Care Connections is asking for your help in efforts to support the rescue and relief workers in our area in the event of a disaster. Here are ways you can help:

- ◊ Time— We need volunteers to staff the child care center in the event of a disaster to ensure appropriate caregiver to child ratios are met.
- ◊ Equipment/Furniture – We need extra equipment brought to the emergency child care site in the event of an emergency (ex. cots, high chairs, port-a-cribs, educational/play materials).

**Basic Early Childhood Trainings Offered On-Site!**

BEST: Bringing Early Success to Providers is a curriculum comprised of ten lessons in *basic* early childhood practice. Each lesson is designed to achieve learning outcomes specific to teachers and caregivers in early childhood programs. The BEST Curriculum is a child-centered curriculum and has direct application to infant/toddler programs as well as preschool programs. BEST offers 23 Montana-approved (self-paced) training hours on-site (in your program). Cost is only \$25!



Each lesson is designed to achieve learning outcomes specific to teachers and caregivers in early childhood programs. The BEST Curriculum is a child-centered curriculum and has direct application to infant/toddler programs as well as preschool programs. BEST offers 23 Montana-approved (self-paced) training hours on-site (in your program). Cost is only \$25!

# From the Professional Development Office

## Kids with Character

Today, many children spend more time in child care than waking hours with their parents. Because of this reality, child care providers play an important role in a child's



development. Modeling from peers, siblings and adults are the most influential messages children receive about character and perceiving and responding to certain situations. Understanding character development and knowing what to expect from each age group will help you become more effective in your interactions with the children in your care.

### 2-3 year olds-

- Display fears of separation/abandonment
- Express sympathy/empathy towards others
- Form strong attachment to objects, i.e.) blankets, toys, etc.

Children who are new to a child care program and even those who have attended for a while may have mornings that they struggle saying goodbye to mom or dad. Finding a buddy to greet the child is a great opportunity for redirection and a way to encourage positive interpersonal relationships.

### 4 year olds-

- Recognize basic emotions
- Distinguish between real and make-believe
- Begin displaying and coping with powerful emotions

Providing a "dramatic play" area fosters character development and aids in the development of linguistics and socialization. If supervised and guided properly it can aid in the development of a child's critical thinking, and problem solving skills as well.

### 5 year olds-

- Become aware of underlying reasons for behavior
- Aware of more subtle emotions (confusion, disappointment) but unable to verbalize it
- May be concerned about doing something new for the first time

Because of their ability to understand the reason for behavior, now is the time to consider a new course of discipline and consequences that may be more effective for the child. School readiness is an important part of the lives of 5 year olds. Begin talking with this group about the new adventure of going to school early and frequently. If you have school age children in your program set aside time for them to be a mentor and talk to the group about their experiences of starting school. Allow them to share the positive feelings as well as more challenging experiences and how they coped with the change.

### 6 year olds-

- Interpersonal skills begin to surface
- Possess care and concern for living things
- Begin to have an acceptance and tolerance for an individual's differences

The network of a 6 year old increases dramatically upon entering the public school system, enrolling in boy/girl scouts, dance classes and sports. They are constantly creating new circles of friends and this is the time to talk to them about what they find unique about these new friends.

For more information about social/emotional development attend our CSEFEL Series trainings. Visit [www.childcareconnections.info](http://www.childcareconnections.info) for training dates.

*Credit to: [www.scholastic.com](http://www.scholastic.com)*

## IMPORTANT NOTICE REGARDING LEARN AT HOME PACKETS

Effective October 1, 2011 providers will be limited to receiving credit through Learn at Home trainings to 2 hours per year. The cost is \$20.00 for each Learn at Home. For additional distance learning opportunities and correspondence courses. visit [www.childcaretraining.org](http://www.childcaretraining.org).

## Upcoming Trainings

Intro to CSEFEL 10/4/11 6:30pm-8:30pm

Mandatory Reporting 10/6/11 6:00pm-9:00pm

Full CPR 10/13/11 6:30pm-9:30pm

CPR/First Aid Abbreviate 10/17/11 6:30pm-9:30pm

Full First Aid 10/20/11 6:30pm-8:30pm

**Jane Arntzen-Schumacher**  
*Executive Director*  
**Stacy Wesen**  
*Assistant Director*  
**Safety Program Coordinator**  
**Suzanne McGary**  
*Finance Manager*  
**Office Manager**  
**Sharda Urdahl**  
*Administrative Assistant*  
**Super Sitter Coordinator**

## PROVIDER SERVICES

**Shauna Gaona**  
*Program Coordinator*  
**Nannette DuCuennois**  
*Early Childhood Specialist*

## FAMILY SERVICES

**Kami Doney**  
*Program Coordinator*  
**Case Manager, Cases A-K**  
**Alyssa Suckow**  
*Case Manager, Cases L-Z*  
**Lynn McHann**  
*Case Manager - TANF, CPS & Self-Employment*

## FOOD & NUTRITION

**Lisa Curry**  
*Program Coordinator*  
**Joanie Slaybaugh**  
*Program Specialist*

## CCC's Wish List

Flip charts  
Crayola markers  
Copy machine  
400- 1 inch white binders  
New children's story books  
Tabbed dividers  
Pocket folders  
Smart board/ media cart  
Ceiling mounted projector  
Six section classification folders

## From the Family Services Office

### Provider vs. Parent



As a business owner, you may feel like you are in a never-ending “boxing match”. As child care providers you may find yourself in this situation frequently as you strive to provide quality care to children. While it is imperative that you uphold the core values of your child care program, remembering that you and the parents really are on the same team will help you to maintain a positive relationship and retain enrollment.

- Be proactive, not reactive. Keep an open line of communication and be respectful and receptive of concerns parents may have; don't become defensive.
- Be conscious of how you are speaking. When confronting a parent, refrain from language that can come across as accusatory or in a way that the

parent feels they are being attacked.

- Make yourself available. Make sure that you have ample staff in the morning when parents are dropping off and in the evening when parents are picking up so you can give them your full and undivided attention. Schedule (and keep) appointments if staffing is an issue.
- Ensure the parents they can trust you. Be discrete when speaking about incidents their child was involved in with other children.

Sometimes it is in best interest that families leave your program because an alternative program may suit the child better. Keeping a positive relationship with parents will help retain enrollment and increase your rate of word-of-mouth referrals.

## From the Safety Office

### CHILD CARE CONNECTIONS PROUDLY SUPPORTS NATIONAL CHILD PASSENGER SAFETY WEEK

Each year, Child Passenger Safety Week (CPS) is celebrated across the country to remind parents and caregivers of the need to keep children of all ages properly restrained in the seat that meets their weight and height requirements. “All it takes is following a few basic guidelines so parents and caregivers can determine which restraint system is best suited to protect their children in a vehicle.” said Stacy Wesen, Child Safety Program Coordinator at Child Care Connections.

Unfortunately, car crashes remain the leading cause of death for children ages 3-14, according to the National Highway Traffic Safety Administration (NHTSA). In efforts to reduce this, Safe Kids USA's multifaceted child passenger safety program – Safe Kids Buckle Up (SKBU) – has been working diligently for the last 14 years. By inspecting 1.4 million car seats; holding 65,000 car seat checkup events; and donating close to



500,000 car seats to families in need, Safe Kids BuckleUp has reached more than 21 million people through events and community outreach efforts. This year is particularly significant because Safe Kids USA spent the course of a year collecting research data from 79,000 child safety seat inspections. A key finding in the Safe Kids USA research showed that less than 1/3 of the forward facing child seats arriving at seat check events used a top tether. A top tether is a strap at the top of the car seat that hooks to a tether anchor in the vehicle, which provides added protection to children by helping reduce the forward movement of child's head in a crash. (continued on page 4)

*Child Care Connections is the lead agency for Safe Kids Gallatin County and Buckle Up Greater Gallatin. Our agency coordinates car seat check up events monthly in Gallatin and Park Counties. For more information, contact Stacy at 406-587-7786 or [stacy@childcareconnections.info](mailto:stacy@childcareconnections.info).*

This project is funded (in part) under a contract with the Montana Department of Public Health and Human Services. The statements herein do not necessarily reflect the opinion of the department. 325 copies of this public document were published at a cost of \$0.50 per copy, 100% of which was through federal funding.





## Child Care Connections

1600 Ellis St., Unit 1A  
Bozeman, MT 59715  
Phone: 406-587-7786  
Fax: 406-587-1682  
Toll Free: 800-962-0418  
admin@childcareconnections.info  
www.childcareconnections.info

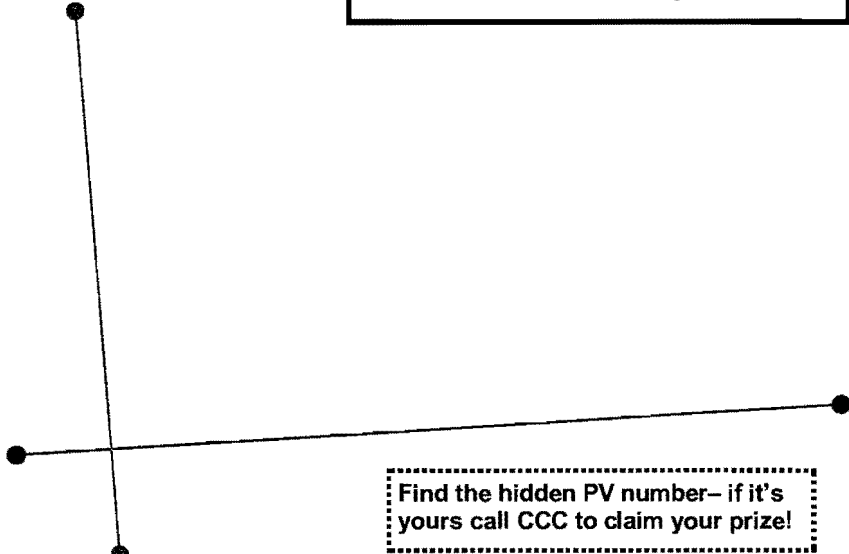


NONPROFIT ORG.  
U.S. POSTAGE PAID  
BOZEMAN, MT  
PERMIT NO. 230

Return Service Requested

**Child Care Connections**  
**Mission Statement**  
"Promoting quality child care by supporting early care educators, families and the communities we serve."  
 

**CCC's Lending Library**  
We have a wide variety of resources and materials available for check out at no cost.  
**Please visit the Early Childhood Project website**  
<http://www.mtecp.org>



## CPS Week ... continued from page 3

"As a nation, we must improve child safety in vehicles and one way to do so is by adopting use of the top tethers. These are on virtually all forward-facing car seats and can be attached to anchors in every car made after 1999," said Torine Creppy, Executive Director of Safe Kids Buckle Up. "Safe Kids is moving quickly to apply the lessons learned from the study". To have a seat checked, please call Stacy at Child Care Connections for an appointment at 587-7786 or stacy@childcareconnections.info. Now is a great time for you and your family to make sure that your child safety seat is installed correctly and to learn when it is time to graduate from one seat to another based on your child's age, weight and height.

## From the Nutrition Office

### Pumpkin Soup

#### Ingredients:

- Butter
- Salt and pepper
- 1 can coconut milk
- 2 cloves garlic (chopped)
- 1 large pumpkin cut into chunks
- Scant handful of coriander leaves

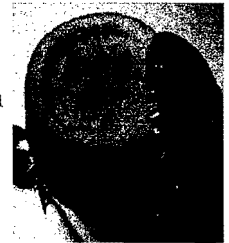
Credit: <http://www.guardian.co.uk/lifeandstyle/2008/oct/18/kids-soups-recipes>

#### Directions:

Put a dollop of butter into a soup pan, then add the pumpkin pieces, cover tightly and sweat until they are tender. Whizz the coriander leaves with the garlic and seasoning in a blender. Then add the pumpkin pieces, and put it all back into the pan with the can of coconut milk. Add a little vegetable or chicken stock until the soup is the thickness you like.

#### Tips:

Get the kids in the kitchen; allow them to help you remove the inside of the pumpkin and separate the seeds. Roast the pumpkin seeds for a later snack.  
<http://allrecipes.com/HowTo/Roasting-Pumpkin-Seeds/Detail.aspx>



# Career Choices & Challenges

A News Sheet about Montana Early Care and Education Career Development

Summer 2011

## Spotlight: Tammy Peters, Southwest Montana

Tammy Peters started her family child care twenty years ago and expanded to a group child care program serving fifteen families. 'Country Bumpkins' child care, serving children from birth to age ten, is located six miles east of Anaconda in the community of Opportunity. She serves families in her own community as well as, Anaconda, Fairmont, Deer Lodge and the Georgetown Lake area. Her program has truly been a "family affair" sharing the many roles with her own parents. She estimates that they have touched the lives of about 115 families over the years!

Tammy is clear that the strong support she has received from her parents has helped her "every step of the way." Her mother, Judy continues to be "Grandma Daycare" to all of the children and helps make sure all of the babies' needs are met. Crawling up into Grandma's lap for cuddling, a story or a song is a treat for the children! "We love spending our days guiding and teaching children to become socially, emotionally, cognitively and physically ready to venture into the big world and go to kindergarten." Tammy's father will be remembered as 'Papa Daycare', adored by all the children as he especially delighted them during the holidays or with popsicles in the summer, and was the "all around maintenance man". He passed away last May and is truly missed by all. Tammy's two daughters, ages 10 and 14 round out the intergenerational mix at Country Bumpkins.

Tammy began her education in early childhood by attending small workshops and conferences. "The Butte 4-Cs was a great resource in helping guide me in the direction I needed to go to get my program started. They were always there when I had questions and challenges that occurred throughout the years." After completing her Child Development Associate credential with course work through UM Western, Tammy became accredited through the National Association of Family Child Care and then went on to receive her Associate Degree in early childhood education. She has taken advantage of the Professional Development Incentive Awards (formerly Merit Pay) to help offset the cost of her continuing education. And her families benefit from the Best Beginnings scholarship program to help pay child care costs.

Tammy was the recipient of the prestigious Barb Mahugh Award which meant a lot to her as Barb was the founding director of Butte 4Cs and a strong advocate for high quality child care and children's services in Montana. "I love watching the children grow and learn while I engage them in developmental activities that help them meet their individual milestones," Tammy says enthusiastically. She appreciates her mixed age group where the older children teach and help the younger ones with "kindness and caring expressions". . . precisely what we love to hear about child care in Montana!

## The Pyramid Model: Research Results

Preliminary results from the first randomized study examining outcomes associated with the Pyramid Model were presented at the annual conference of the American Educational Research Association in New Orleans in April 2011 and the Third Conference of the International Society of Early Intervention in New York in May. The study was conducted with public school classrooms enrolling preschool children with disabilities in Florida and Tennessee. Researchers found that teachers in experimental conditions who received training and coaching demonstrated statistically significant differences in their implementation of Pyramid Model practices. They also found that children enrolled in the experimental classrooms implementing the Pyramid Model demonstrated statistically significant differences in their social skills. Additionally, target children in the experimental classrooms had statistically significant reductions in problem behavior. Would you like to learn more? A PowerPoint is posted on the TACSEI web site at [www.challengingbehavior.org/](http://www.challengingbehavior.org/)

Don't stress about fitting classroom workshops into your schedule. Instead, complete your annual training hours from home!

ChildCareTrainings.org is your source for early childhood professional development! Competitive pricing. Courses offered on-demand, 24/7. Individual feedback from instructors. Guaranteed grading in 3 business days.

Check out our newest course offerings, *Exploring Observation in Early Childhood Settings* and *Medication Administration in Child Care - Part 1 and Part 2*.

We also offer several courses that can be of great benefit when managing your child care business, such as *Personnel Management in Child Care Centers* and *Basic Bookkeeping Practices for Your Child Care Business*.

Log on to:  
[www.childcarenetwork.com](http://www.childcarenetwork.com)  
today!

## Name Change

The first level on the Montana Early Care and Education Career Path has a new name! The Career Development Advisory Board responded to feedback from the field and renamed the Pre-Professional Level Certificates and Professional Development Records will now read:

Early Childhood Practitioner

## Accreditation Scholarships for WHO?

The ECP has been offering scholarships for the full cost of program accreditation through the National Association for the Education of Young Children (NAEYC) and the National Association for Family Child Care (NAFCC) for many years. Our accounts with those organizations have assisted many programs in becoming accredited!

Please note that if you are receiving incentive grants through the new STARS or Quality program, those funds must be utilized to pay for your accreditation fees. We will continue to offer scholarships to programs who are not receiving incentives through STARS. We are committed to helping additional programs access and utilize funds for improving the quality of early care and education for children and families in Montana!

## The 2011 Montana Association for the Education of Young Children (MtAEYC) CONFERENCE



The Annual Montana Early Childhood Conference is coming to Bozeman in October! It will be held at the Strand Union Building on the Montana State University campus with registration beginning at 7:30 on October 14.

The title of this year's conference is, "Montana: Creating a State of Well-Being" and will feature keynote speaker, Donna Donnelly (Life Guides Inc.), who will truly awe and inspire everyone with her creative and unique ways to deal with stress. Participants will be able to attend up to 14 hours of approved training, receive CEU's by taking one of the 5 hour sessions or receive OPI Renewal Units. Other featured events include a wine and cheese social at the famous Museum of the Rockies which is included in the registration fee and bus tours, on Saturday, of early childhood programs in the Bozeman area (fee is \$10.00/person).

The Early Childhood Project will, once again, host the Registry Café where you can stop by for refreshments, an overview of the Registry, one-on-one computer assistance, and ask questions you may have about your professional development. In addition, a special viewing room will be open throughout the conference, which will feature a multi-media exhibit entitled, "The Hundred Languages of Adults". You will find registration and hotel information on the MtAEYC website: [www.mtaeyc.org](http://www.mtaeyc.org) For additional information please call Ann at 406-994-7454. We look forward to seeing everyone at the conference and at the Registry Café!

## We Want YOU to RENEW!

Practitioner Registry Renewal AWARDS are coming in from all over the state. In the past three months the Early Childhood Project has granted fifty AWARDS totaling \$7,800. If you are a Level 2 or higher with 2,4,6,8 or 10 renewal diamonds on your new 2012 certificate you can qualify for this AWARD. To learn more about it and find the application, go to our homepage [www.mtecp.org](http://www.mtecp.org) and click on AWARDS.

## Congratulations...

This year we approved an overwhelming 128 applicants from across the state totaling \$40,600 for the PDIA for approved early childhood training. Individuals receive \$200 or \$400 for completion of 25 or 50 hours of training. We share your learning goals with your area Child Care Resource and Referral Agency to help them plan to meet your professional development needs.

Fall semester PDIA—Higher Ed awarded \$750 to a total of 61 individuals who are enrolled in early childhood college courses in Montana that lead to a Level 4 or higher on the Practitioner Registry. Spring Semester applications will be posted on our website, [www.mtecp.org](http://www.mtecp.org), on October 7, 2011 under 'What's New' at the bottom of the home page.

## Protecting Your Privacy

Beginning September 1, 2011, the ECP will be upgrading our commitment to privacy. When you call to find out your ID and or password, you will be asked to verify who you are by giving us your birth date and last 5 digits of your social security number. We will no longer be able to:

- give IDs and passwords through email requests or to anyone other than the you over the phone.
- provide any personal information about an individual's Registry level to anyone other than the individual (such as required Registry training, college transcript review information, or other education).

If you are requesting information about documentation required for an individual to complete their Registry application, we will be able to supply you with that general information.



# Congratulations!!!

The following **STARS to Quality** participants have achieved the following STAR Levels and are working hard on accomplishing requirements for the next level:

## STAR Level 1:

- \*Heritage Christian Early Learning Center- Tammy Christofferson & staff
- \*Little Bears Day Care- Lorri Ward & staff
- \*Quail Hollow- Kristee Sturgill & staff
- \*Manhattan Christian Early Learning Center- Christy Aitchison & staff
- \*Apple Dumpling- Melissa Christofferson

## STAR Level 2:

- \*\*ASMSU-Mary Bolick & staff
- \*\*Blessings Abound- Wendy Cornell
- \*\*Little People's Academy- Terry Quatraro & staff
- \*\*Lil' Feet- Maria Domingue

The Best Beginnings STARS to Quality Program is a voluntary quality rating improvement system that aligns quality indicators with support and incentives for early childhood programs and early professionals. For more information please visit the following website:

[www.bestbeginnings.mt.gov](http://www.bestbeginnings.mt.gov)



## Congratulations to the following Professional Development Stars

who have completed the **CSEFEL Preschool Series** (Introduction, Preschool Modules 1, 2, and 3a and 3b):

Mary Bolick  
Jill Caine  
Terry Quatraro  
Jean Dunbar  
Robyn Cavaness  
Rosalinda Gonzalez  
Lorna Wyatt  
Farideh Salehi

Sally Hull  
Emily Veltkamp  
Sally Turnquist  
Carrie Ferguson  
Leah Turner  
Stacy Burley  
Barbara Harris

Maria Domingue  
Kathleen Wiersema  
Tori Rasmussen  
Cathy Suit  
Christy Aitchison  
Sarah Lacy  
Alison Dowd

**CSEFEL Infant/Toddler Series** (Introduction, Infant/Toddler Modules 1, 2, and 3):

Anna Miller  
Barbara Harris  
Farideh Salehi  
Maria Domingue  
Sharon Van Dyken  
Lorna Wyatt  
Lorri Ward

Deborah Sebena  
Rosalinda Gonzalez  
Amanda Adams  
Sukhui Graham  
Amy Delgatty  
Melissa Christofferson  
Christy Aitchison

Corrie Knight  
Terry Quatraro  
Sarah Lacy  
Regina Ohnstad-Couture  
Stacy Burley  
Lisa Durfee



## Congratulations to the following Professional Development Stars

who have completed the **MT Preschool Teacher Education Course**:

Macey McClennen  
Lorri Ward  
Sarah Lacy  
Jacklyn Ward

Christy Aitchison  
Sharon Hardesty  
Cathy Suit  
Jessica Bean

Sarah VanDyke  
Rosalinda Gonzalez  
Maria Domingue



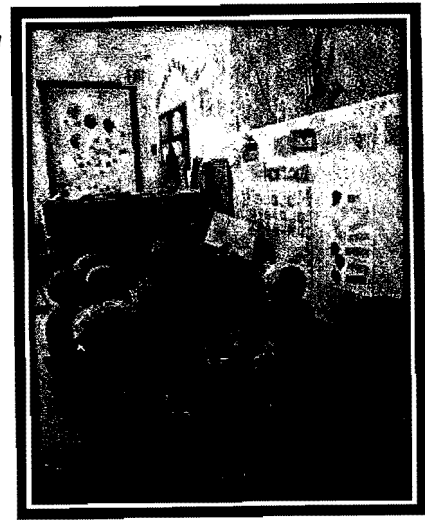
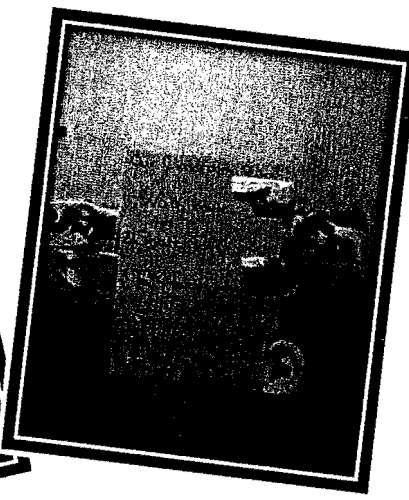
## Congratulations to the following Professional Development Stars

who have completed the **MT Infant/Toddler Caregiver Course**:

Annette Crosier  
Farideh Salehi  
Lindsay Francetich  
Ashley Lyons

Sarah Nelson  
Amy Callentine  
Sarah Lacy  
Kara Hagenlock

Cheryl Pestel  
Lillian Dunayer  
Abby Kimm



## Spotlight on the STARS...by: Shauna Gaona



I would like to take the time to acknowledge some hard work, dedication and effort toward quality improvement. Manhattan Christian Early Learning Center is participating in the STARS to Quality Field test and has been working very hard on improving their program. The staff have attended many required trainings and implemented strategies program wide. During one of my coaching visits one teacher stated that she really wished that she had completed the CSEFEL training years ago. She stated that it really has made a difference in building a strong rapport with children with behavior issues.

“When the STARS program was introduced to me, my first thought was, WOW, this looks like a lot of work! However, I knew it could only make us better as child care providers, and it would give us the opportunity to grow as a center with the help of a coach. Our center is a new building, we needed a road map to help us improve and I felt STARS was the answer. It gave me as the director a way to meet other providers and directors through attending the many required trainings. We are not in the STARS to quality program for incentives, which

means we receive no money as we earn stars. We are in the program to use the resources that are available to us to become the best center that we can be.

One of the best required trainings for the staff to attend has been the CSEFEL training, this focuses on how to help children behave when difficult situations arise with their peers. One teacher was in a difficult situation with a child and asked herself, "What would CSEFEL do?" The training has been a valuable tool in understanding the underlying problems with some behaviors. The CSEFEL training has been life changing for many of the teachers and we are all seeing the benefits of implementing it in everyday routines. By using the knowledge and the tools that are practiced in the trainings, we have been able to build and strengthen our relationships with the children in our care.

Now that our team of teachers has completed the CSEFEL trainings, we have a model to lean on. When one idea is not working with a challenging behavior, we can lean on each other for support and pull a new tool out of our back pocket and try something else. We are all more confident dealing with children and their peers when difficult problems come up." Submitted by Christy Aitchison, Director MCELC

Keep up the great work MCELC!

